

# SL1 SMART LOGGER

WIFI DATA ACQUISITION SYSTEM  
SISTEMA DI ACQUISIZIONE DATI WIFI



DATA ACQUISITION SYSTEM  
SISTEMA DI ACQUISIZIONE DATI



MODEL	P/N
SL1 Smart Logger Wifi	GK-SL1-0001
SL1 Smart Logger	GK-SL1-0002
SL1 Smart Logger for Honda CBR 1000 RR-R (2020)	GK-SL1CBR-0001

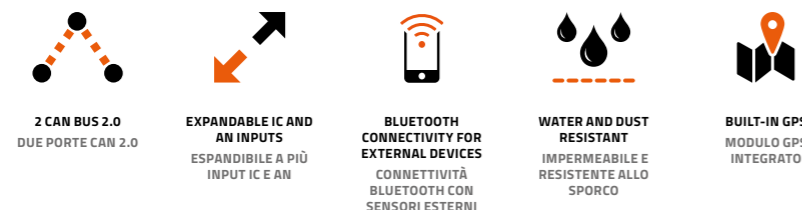
## INCLUDED IN THE KIT INCLUSO NEL KIT



The brand-new SL1 GET Data Logging System is the essence of technology. It is robust, light-weight and compact. The case is IP67 protection grade for the toughest riding conditions. Thanks to built-in GPS and Sensor Fusion Technology SL1 increases position accuracy. SL1 has been designed to expand standard data loggers connectivity. CAN-BUS communication enables data flow from ECU and/or sensors with only two wires while BLE allows wireless logging of biometric sensors such as Heart Rate. Thanks to the WiFi connection, device configurations and data download can be done fast and easily. SL1 logger comes with WINTAX4 GET "JUNIOR" analysis software.

Il nuovissimo Sistema di Acquisizione Dati GET SL1 è estremamente tecnologico, leggero e compatto. Il suo case ha un grado di protezione IP67 per resistere alle condizioni degli sport più estremi. Grazie alla tecnologia integrata GPS ed alla Sensor Fusion Technology, SL1 aumenta l'accuratezza della posizione. La comunicazione CAN-BUS permette di esportare dati dalla centralina e/o dai sensori utilizzando soltanto due cavi mentre la connessione BLE di acquisire, senza fili, sensori come quello cardio ad esempio. Grazie alla connessione Wifi infine, le configurazioni del dispositivo e lo scarico dati possono essere effettuati facilmente e velocemente. Il sistema SL1 è conclusivo del software di analisi WINTAX4 GET "JUNIOR".

## KEY BENEFITS PUNTI DI FORZA



## MAIN FEATURES CARATTERISTICHE PRINCIPALI

### ELECTRICAL SPECIFICATIONS

MAIN POWER SUPPLY INLET	9-18 VDC
OPTIONAL POWER SUPPLY INLET	5 VDC (mini USB port)
AUXILIARY OUTPUT VOLTAGE (FOR EXT. SENSORS POWER SUPPLY)	5VDC - 70mA max.

### SYSTEM SPECIFICATIONS

BUILT-IN BACKUP BATTERY	3.7VDC rechargeable LiOn Battery
BUILT-IN MEMORY	8 GB Flash
SYSTEM CLOCK	Built in Real Time Clock (RTC) and GPS clock
BUILT IN GPS CHARACTERISTICS	Sensitivity: 167dB - Update rate:10Hz with ext active antenna
SYSTEM BUILT-IN SENSORS	9-axis Inertial platform with Sensor Fusion Technology (3D accel. and 3D gyro)
GPS LED STATUS	✓
SYSTEM LED STATUS	✓
LOGGING LED STATUS	✓
GPS ANTENNA CONNECTOR	SMA
CASE TYPE	High - strength plastic case
CASE DIMENSIONS	21mm x 62mm x 79mm (without harness and GPS connector)
WEIGHT	≈400g
IP GRADE	IP 67
FIRMWARE UPDATES	✓ (via WiFi or via USB)

### HARNESS SPECIFICATIONS

SL1 MAIN CABLE	9 poles HRS connector (DF62W-9EP-2.2C) - cable length: 150mm
SL1 EXPANSION CABLE	8 poles JST connector (08T-JWPF-VSLE-D) - cable length: 150mm
SL1 USB CABLE	Sealed Mini USB connector - cable length 500mm

### STANDARD INPUT PORT SPECIFICATIONS

ANALOG SIGNAL INPUT	3 analog input port (signal range 0-5V)
FREQUENCY INPUT	1 frequency input for RPM or SPEED signals
BEACON INPUT	1 beacon input for lap triggering (signal range 0-5V)

### DATA BUS SPECIFICATIONS

CAN PORT	2 High Speed 2.0 ports (125 - 250- 500 kb/s, 1Mb/s) Intel/Motorola format
----------	---

### CONNECTIVITY

USB 2.0 PORT	✓
BLE	✓
WIFI	✓

### SOFTWARE:

DESKTOP SOFTWARE	LinxLog & WinTAX4 Analysis Software
------------------	-------------------------------------

## ADDITIONAL ACCESSORIES ACCESSORI AGGIUNTIVI



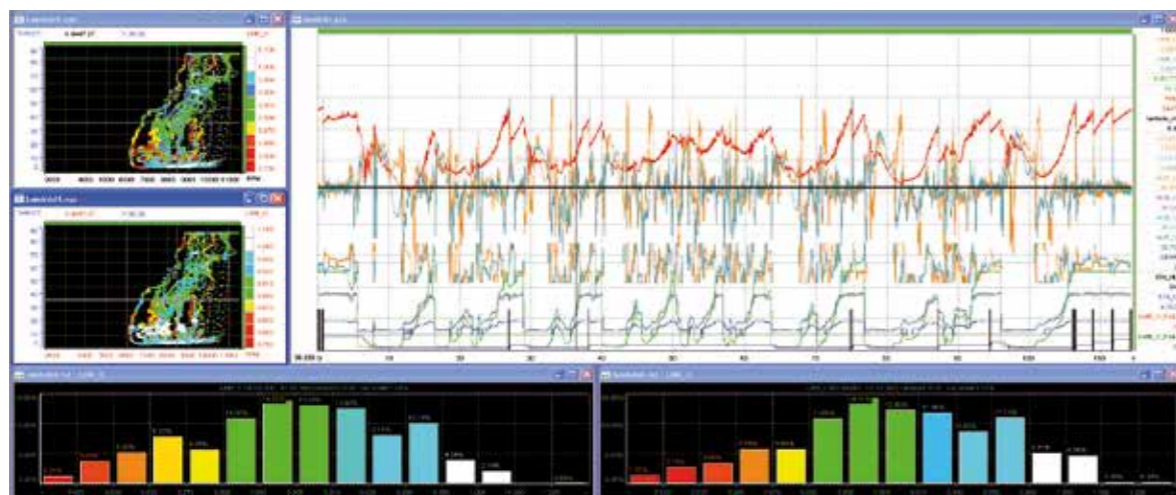
### WINTAX4 GET USER

WinTAX4 is a complete suite of data analysis tools developed to show vehicle and engine behaviors data, acquired from Data Loggers.

WINTAX4 è un pacchetto completo di strumenti per l'analisi dati che permette di visualizzare parametri di comportamento del motore e del veicolo acquisiti dai dispositivi GET.

# WINTAX4 GET BY MAGNETI MARELLI

## DATA ANALYSIS SOFTWARE - SOFTWARE DI ANALISI DATI



WinTAX4 is a complete suite of data analysis tools developed for the most advanced levels of motorsport. Especially engineered for GET users, WinTAX4 GET shows vehicle and engine behaviors data, acquired from Data Loggers. This high-end tool allows researching and development of most complete and complex vehicles! The software also presents an intuitive interface with graphic display, reports, histograms, overlay on videos and Google Earth with low system resources

WINTAX4 è un pacchetto completo di strumenti per l'analisi dati sviluppato per i più avanzati livelli di motorsport. Studiato appositamente per gli utenti GET, WinTAX4 GET permette di visualizzare parametri di comportamento del motore e del veicolo, acquisiti dai dispositivi GET. Il sistema trasmette grafici telemetrici in tempo reale per mezzo di una rete per gestire il flusso dati e analizzarlo. Il software presenta anche un'interfaccia intuitiva con grafici, report, istogrammi, sovrapposizioni con video e Google Earth con basso utilizzo di risorse di sistema.

### FEATURE COMPARISON CONFRONTO CARATTERISTICHE



#### FEATURE:

	UNPROTECTED – SINGLE WORKSTATION	Multi workstation - require USB Dongle
SOFTWARE INSTALLATION / RUNNING	UNPROTECTED – SINGLE WORKSTATION	Multi workstation - require USB Dongle
MULTI LANGUAGE SUPPORT	Only English	✓ (ENG-ITA-DEU-FRA-JAP)
GRAPH	2 Graph, 16 Channels each one	Unlimited
X-Y GRAPH	1 XY, two channels	Unlimited
XYZ GRAPH	X	✓
HISTOGRAM	1	✓
TRACK	basic track line	✓
MULTIPLE LAPS COMPARISON	Max. 2 Laps	✓
DIFFERENCE MODE LAPS COMPARISON	X	✓
GOOGLE EARTH TRACK OVERLAY	✓	✓
SECTION TIME REPORT	X	✓
LAP REPORT	Single Lap Only	✓
CHANNEL TREND FUNCTION	X	✓
SESSION RUN PREVIEW	✓	✓
DIAGNOSTIC GRAPH	X	✓
GAUGE INDICATORS	X	✓
CHANNEL ALARMS	✓	✓
CHANNEL EVENTS	X	✓
FFT WINDOW	X	✓
MATH CHANNELS	8 Max.	✓
LOOKUP TABLE	X	✓
FFT - RUN AVG FILTERS	X	✓
ASCII IMPORT	X	✓
ASCII EXPORT	X	✓
VIDEO-DATA MANAGEMENT	✓	✓

DATA ACQUISITION



DATA ACQUISITION

#### MODEL

#### P/N

WINTAX4 GET JUNIOR

GK-WINTAX-0002

WINTAX4 GET USER

GK-WINTAX-0001



Photo: Youthstream